

PART OF E. 1/2 SEC. 15, & N.W. 1/4 SEC. 14, T.5 N., R.1 W., S.L.B. & M.

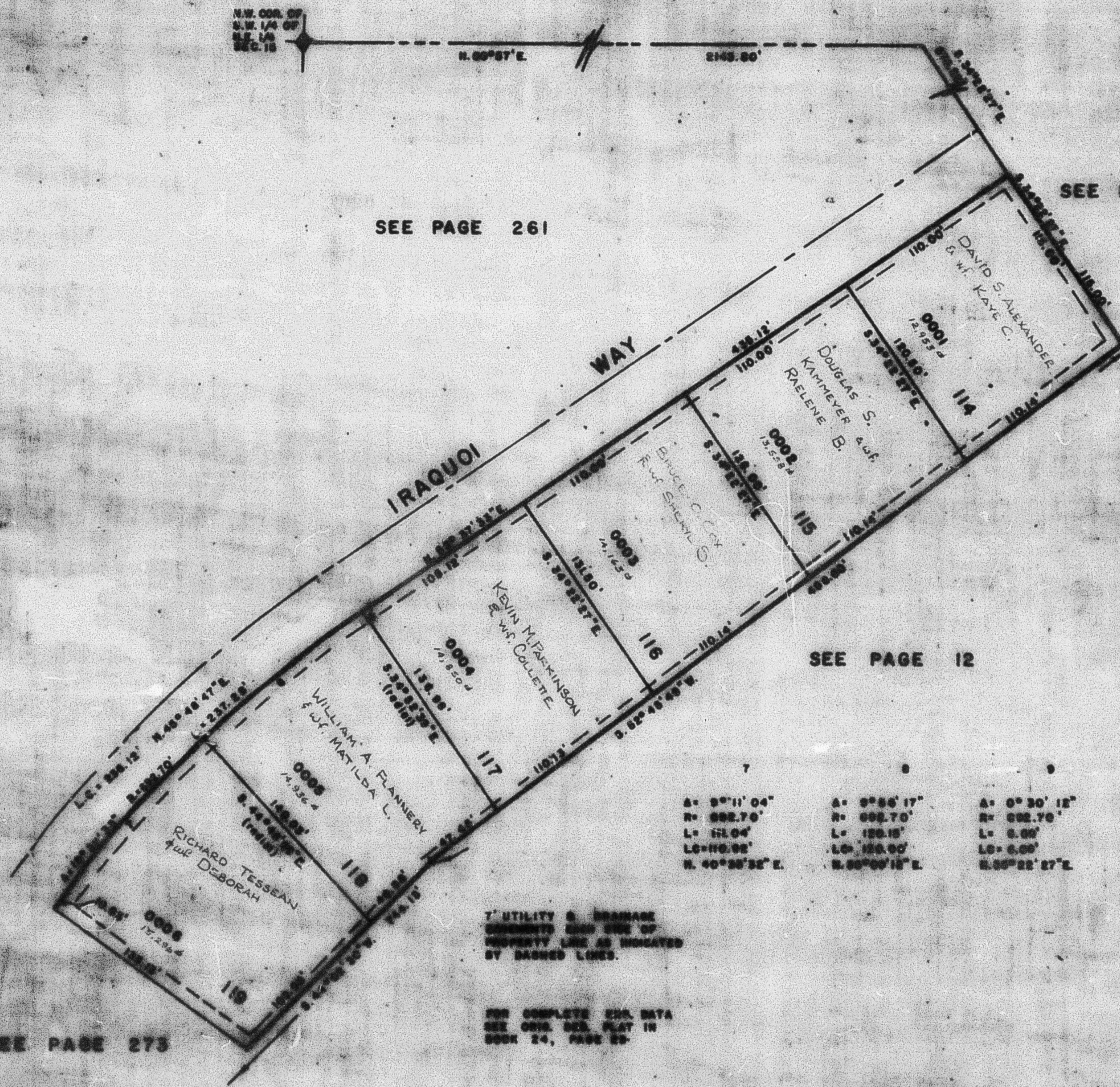
272

# SHADOW VALLEY ESTATES NO. 10

AMENDED PLAT  
LOTS 114 TO 119  
IN OGDEN CITY  
SCALE 1" = 50'

TAXING UNIT 25

PREFIX 07-272



SEE PAGE 261

SEE PAGE 12

SEE PAGE 12

SEE PAGE 273

A = 9° 11' 04"	A = 9° 55' 17"	A = 0° 30' 12"
R = 882.70'	R = 882.70'	R = 882.70'
L = 110.04'	L = 120.18'	L = 8.89'
LC = 110.02'	LC = 120.00'	LC = 8.89'
N. 40° 38' 32" E.	N. 88° 09' 15" E.	N. 88° 22' 27" E.

UTILITY & DRAINAGE  
EASEMENTS EACH SIDE OF  
PROPERTY LINE AS INDICATED  
BY DASHED LINES.

FOR COMPLETE EDD DATA  
SEE ORIG. SURV. PLAT IN  
BOOK 24, PAGE 29